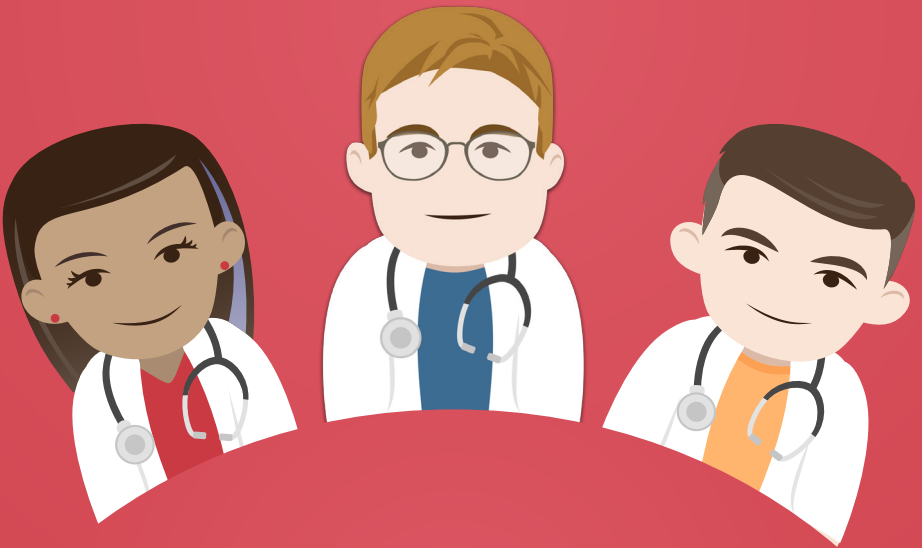


# EXERCISE STRESS ECG ESSENTIALS WORKSHOP

REFERENCE LIST



Christopher Dunbar,  
PhD, MPH, RCEP, FACSM

# Reference list

- Basaria, S and Cooper, DS. 2005. Amiodarone and the thyroid. *Am J Med.* **118**: 706–714. [PMID: 15989900](#)
- Braverman, LE. 1994. Iodine and the thyroid: 33 years of study. *Thyroid.* **4**: 351–356. [PMID: 7833675](#)
- Bunch, TJ, Chandrasekaran, K, Gersh, BJ, et al. 2004. The prognostic significance of exercise-induced atrial arrhythmias. *J Am Coll Cardiol.* **43**: 1236–1240. [PMID: 15063436](#)
- Caldwell, G, Kellett, HA, Gow, SM, et al. 1985. A new strategy for thyroid function testing. *Lancet.* **1**: 1117–1119. [PMID: 2860333](#)
- Ekins R. 1992. The free hormone hypothesis and measurement of free hormones. *Clin Chem.* **38**: 1289–1293. [PMID: 1307685](#)
- Fletcher, GF, Ades, PA, Kligfield, P, et al. 2013. Exercise standards for testing and training: a scientific statement from the American Heart Association. *Circulation.* **128**: 873–934. [PMID: 23877260](#)
- Fradkin, JE and Wolff, J. 1983. Iodide-induced thyrotoxicosis. *Medicine (Baltimore).* **62**: 1–20. [PMID: 6218369](#)
- Gauri, AJ, Raxwal, VK, Roux, L, et al. 2001. Effects of chronotropic incompetence and beta-blocker use on the exercise treadmill test in men. *Am Heart J.* **142**: 136–141. [PMID: 11431669](#)
- Gerstenblith, G, Lakatta, EG and Weisfeldt, ML. 1976. Age changes in myocardial function and exercise response. *Prog Cardiovasc Dis.* **19**: 1–21. [PMID: 134392](#)
- Grady, TA, Chiu, AC, Snader, CE, et al. 1998. Prognostic significance of exercise-induced left bundle-branch block. *JAMA.* **279**: 153–156. [PMID: 9440667](#)
- Herbert, WG, Dubach, P, Lehmann, KG, et al. 1991. Effect of beta-blockade on the interpretation of the exercise ECG: ST level versus delta ST/HR index. *Am Heart J.* **122**: 993–1000. [PMID: 1681723](#)

Mark, DB, Hlatky, MA, Lee, KL, et al. 1987. Localizing coronary artery obstructions with the exercise treadmill test. *Ann Intern Med.* **106**: 53–55. [PMID: 3789578](#)

Martino, E, Aghini-Lombardi, F, Mariotti, S, et al. 1987. Amiodarone: a common source of iodine-induced thyrotoxicosis. *Horm Res.* **26**: 158–171. [PMID: 2885251](#)

Myers, J, Arena, R, Franklin, B, et al. 2009. Recommendations for clinical exercise laboratories: a scientific statement from the american heart association. *Circulation.* **119**: 3144–3161. [PMID: 19487589](#)

Naughton, J, Sevelius, G and Balke, B. 1963. Physiological responses of normal and pathological subjects to a modified work capacity test. *J Sports Med Phys Fitness.* **3**: 201–207. [PMID: 14099069](#)

Ross, DS. 2011. Radioiodine therapy for hyperthyroidism. *N Engl J Med.* **364**: 542–550. [PMID: 21306240](#)

Ross, DS, Burch, HB, Cooper, DS, et al. 2016. 2016 American Thyroid Association Guidelines for Diagnosis and Management of Hyperthyroidism and Other Causes of Thyrotoxicosis. *Thyroid.* **26**: 1343–1421. [PMID: 27521067](#)

Rywik, TM, Zink, RC, Gittings, NS, et al. 1998. Independent prognostic significance of ischemic ST-segment response limited to recovery from treadmill exercise in asymptomatic subjects. *Circulation.* **97**: 2117–2122. [PMID: 9626171](#)

Spencer, CA, Takeuchi, M and Kazarosyan, M. 1996. Current status and performance goals for serum thyrotropin (TSH) assays. *Clin Chem.* **42**: 140–145. [PMID: 8565217](#)

Surks, MI, Chopra, IJ, Mariash, CN, et al. 1990. American Thyroid Association guidelines for use of laboratory tests in thyroid disorders. *JAMA.* **263**: 1529–1532. [PMID: 2308185](#)



Become an expert by learning the most important clinical skills at [www.medmastery.com](http://www.medmastery.com).