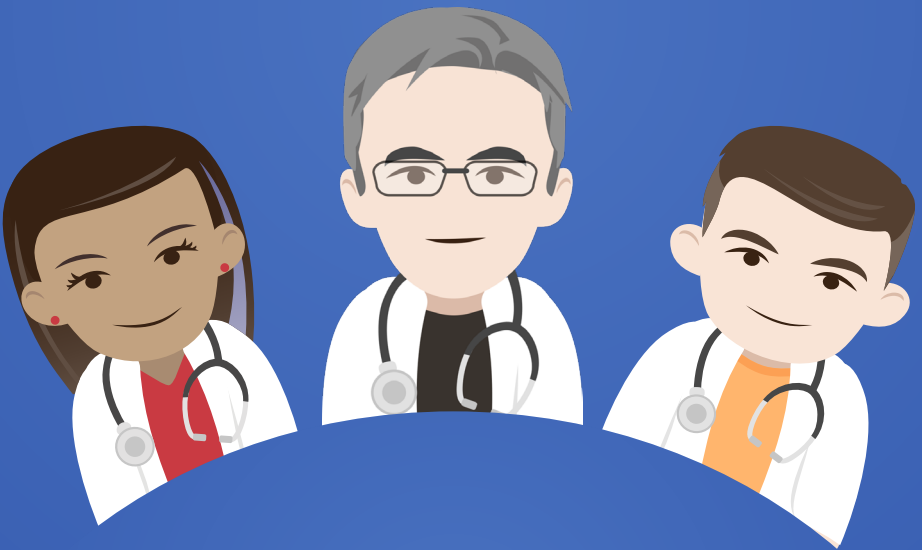


CHEST X-RAY ESSENTIALS WORKSHOP

REFERENCE LIST



Julian Dobranowski,
MD FRCPC

Reference list

Collins, CD, Lopez, A, Mathie, A, et al. 1995. Quantification of pneumothorax size on chest radiographs using interpleural distances: regression analysis based on volume measurements from helical CT. *AJR Am J Roentgenol*. **165**: 1127–1130. [PMID: 7572489](#)

Henry, M, Arnold, T, and Harvey, J. 2003. BTS guidelines for the management of spontaneous pneumothorax. *Thorax*. **58**: ii39–ii52. [PMID: 12728149](#)

Hopstaken, RM, Witbraad, T, van Engelshoven, JM, et al. 2004. Inter-observer variation in the interpretation of chest radiographs for pneumonia in community-acquired lower respiratory tract infections. *Clin Radiol*. **59**: 743–752. [PMID: 15262550](#)

Lee, TH, Cook EF, Weisberg, M, et al. 1985. Acute chest pain in the emergency room. Identification and examination of low-risk patients. *Arch Intern Med*. **145**: 65–69. [PMID: 3970650](#)

Maw, AM, Hassanin, A, Ho, PM, et al. 2019. Diagnostic Accuracy of Point-of-Care Lung Ultrasonography and Chest Radiography in Adults With Symptoms Suggestive of Acute Decompensated Heart Failure: A Systematic Review and Meta-analysis. *JAMA Netw Open*. **2**: e190703. [PMID: 30874784](#)

Ravin, CE. 1988. Pulmonary vascularity: radiographic considerations. *J Thorac Imaging*. **3**: 1–13. [PMID: 3336060](#)

Ringstrom, E and Freedman, J. 2006. Approach to undifferentiated chest pain in the emergency department: a review of recent medical literature and published practice guidelines. *Mt Sinai J Med*. **73**: 499–505. [PMID: 16568192](#)

Seow, A, Kazerooni, EA, Pernicano, PG, et al. 1996. Comparison of upright inspiratory and expiratory chest radiographs for detecting pneumothoraces. *AJR Am J Roentgenol*. **166**: 313–316. [PMID: 8553937](#)

Walker, NJ, Sites, FD, Shofer, FS, et al. 2001. Characteristics and outcomes of young adults who present to the emergency department with chest pain. *Acad Emerg Med.* **8**: 703–708. [PMID: 11435184](#)

Woodring, JH and Reed, JC. 1996. Types and mechanisms of pulmonary atelectasis. *J Thorac Imaging.* **11**: 92–108. [PMID: 8820021](#)



Become an expert by learning the most important clinical skills at www.medmastery.com.